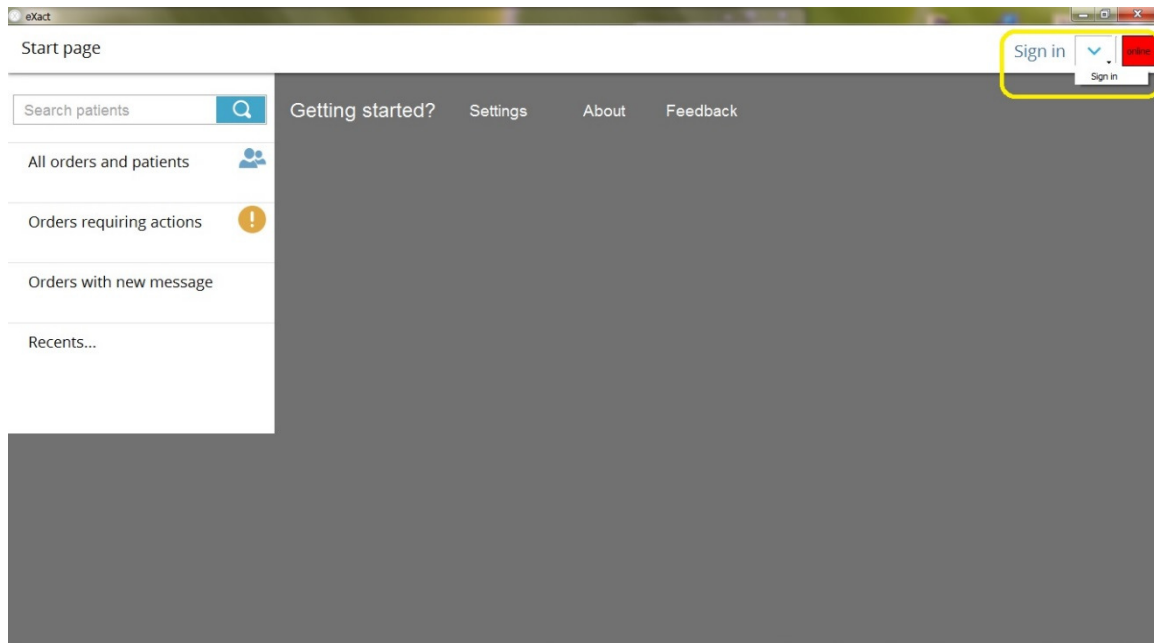


Software Quick Guide – Version 1.0 June 15,2014

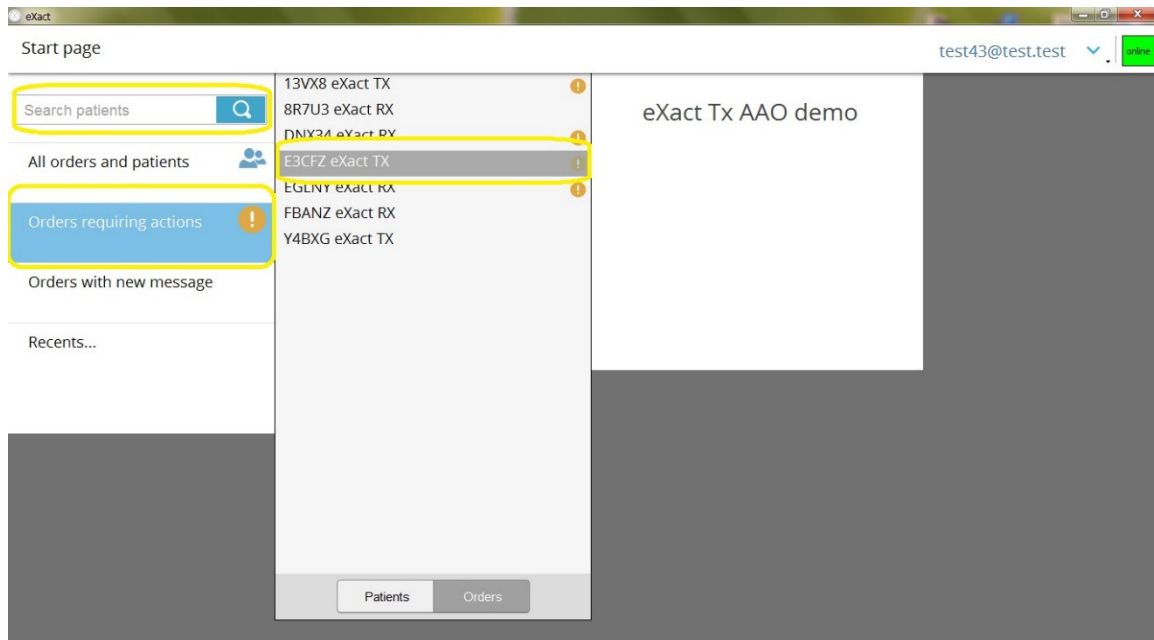
Section 1 – Introduction and Basic Features

1.1 To start using the program, click on the icon on your desktop.

1.2 All cases are stored on the cloud so be able to view files, on-line access is required. To open your files, sign in with you login and password.

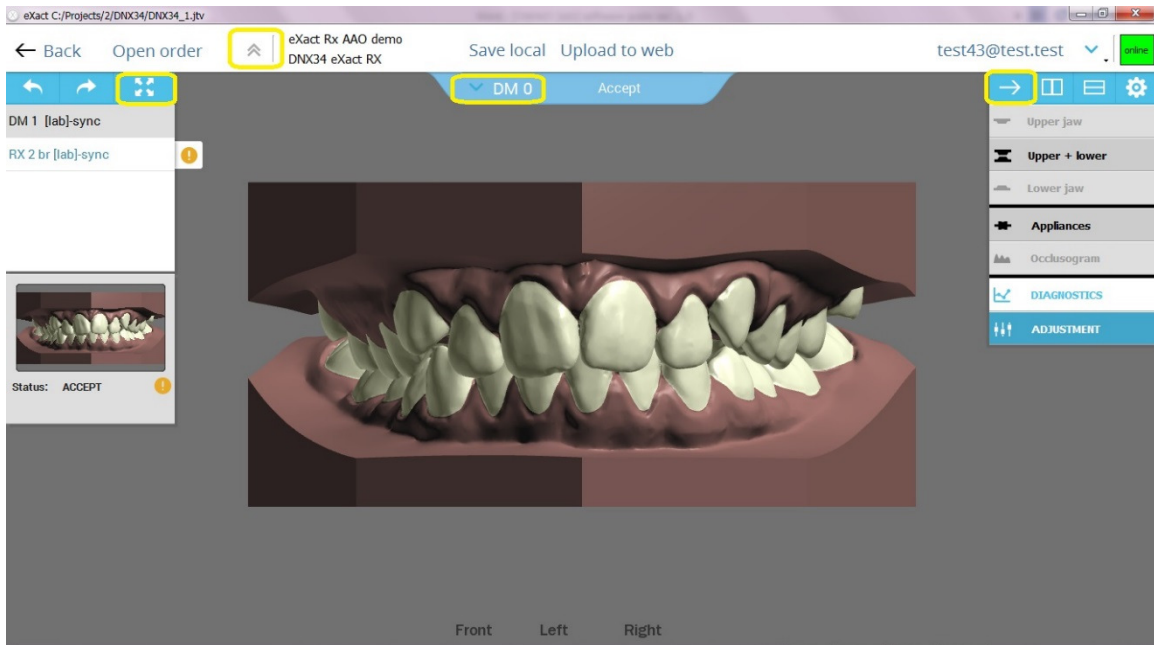


1.3 When logged in, use the “Search” function to look for a specific patient, or go directly to orders requiring action, orders with new message, or orders that were recently accessed.



1.4 When the relevant order has been found, double click to open the bracketing plan.

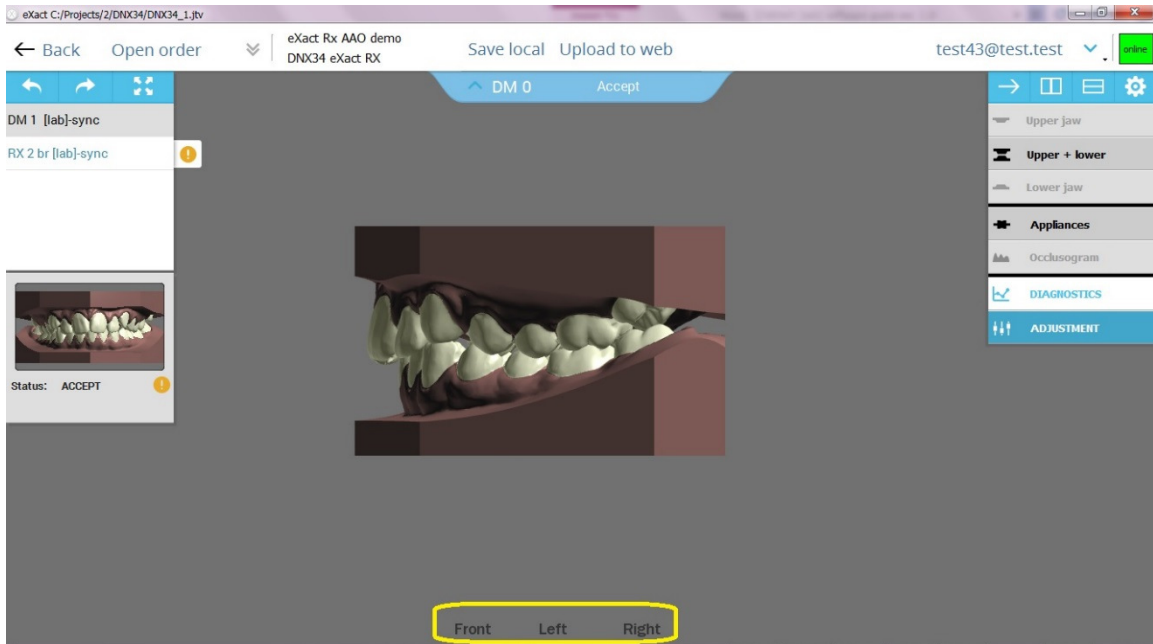
1.5 In the main screen, all menus can be toggled on and off, so work environment can be fully customized.



1.6 To fully benefit from the three-dimensional properties of the model, a 3-button mouse is recommended. Click and hold the right button to rotate the model; scroll the middle button up and down to zoom in and out; and click and hold left button to select and move teeth or brackets.



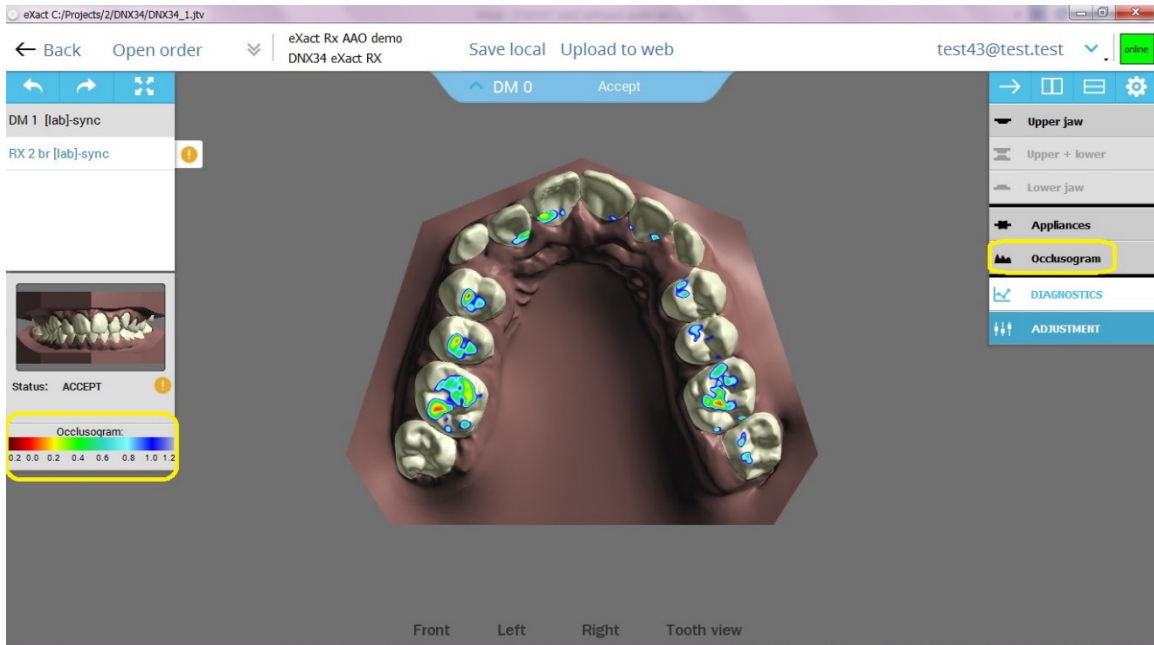
1.7 For easier browsing, click any button for the front, left, right or back views.



1.8 It is also possible to toggle between viewing a full model or the separated arches. Click on "occlusal" at the bottom for an occlusal view of the arch.



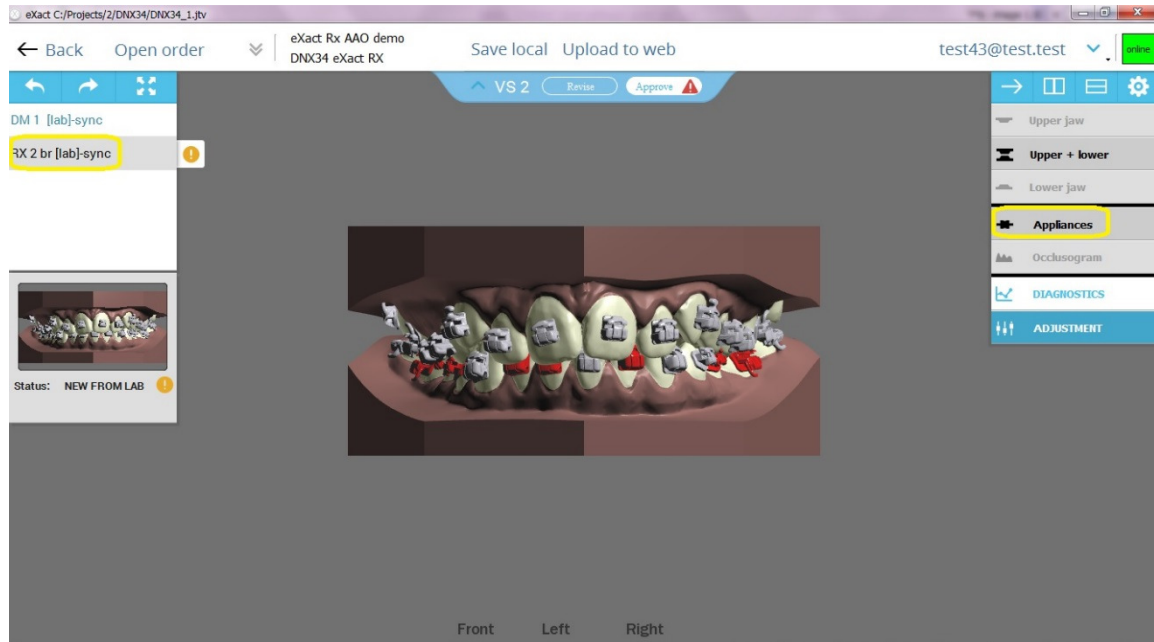
1.9 Every view can also be displayed with the occlusogram – a color chart depicting the distances between the upper and lower arches.



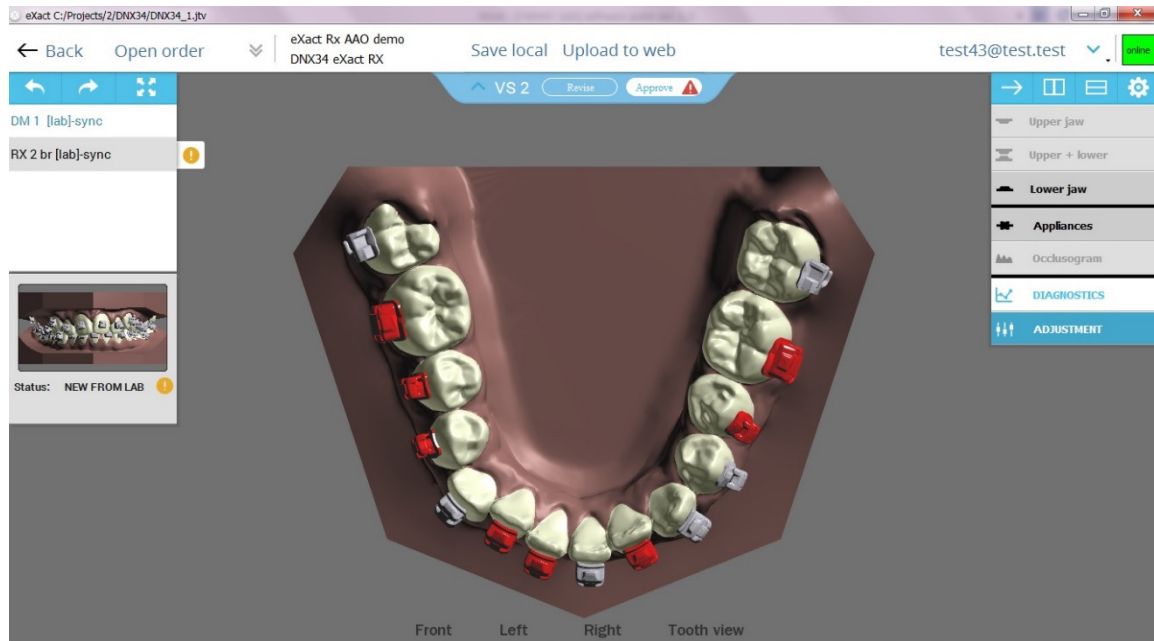
Section 2 – reviewing and adjusting an Rx case

2.1 Open an Rx case. At this point, the objective is to decide whether the suggested pre-treatment bracketing plan can be approved or whether changes are necessary.

2.2 Select the relevant Rx plan and ensure the “Appliances” module is switched on.



2.3 Review the full model using the front, left, right and back positions. Then, switch to the occlusal view and review the upper and lower arches separately.

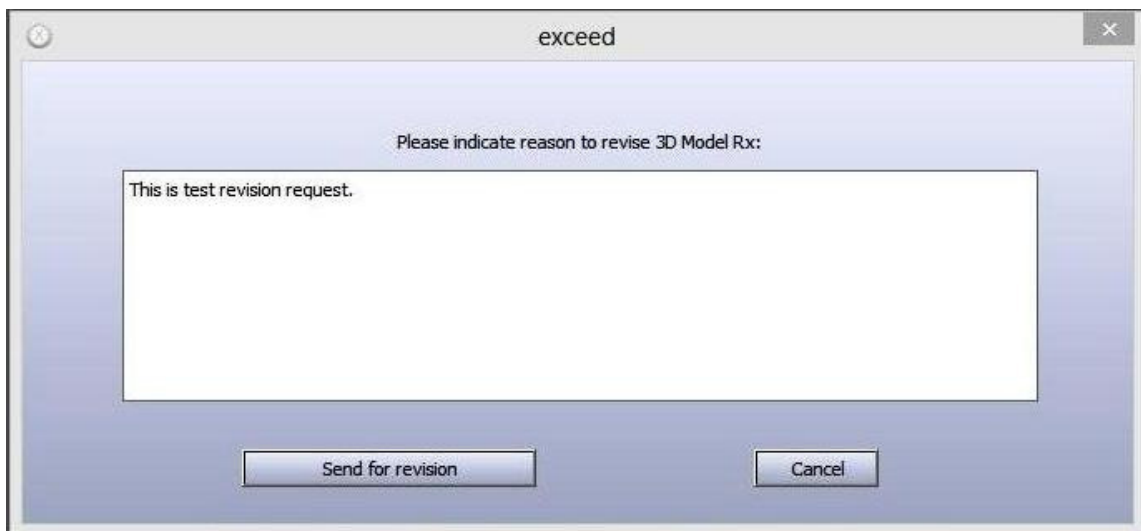


2.4 Move back to the full frontal position, zoom in and slowly rotate the model to examine bracket position.

2.5 If no changes are necessary in the Rx bracketing plan, you can go ahead, hit “Approve” and the order will go into production.



2.6 In the event the plan has to be modified, two methods are suggested. The first is to hit the “Revise” option and describe in writing the necessary changes. A new plan incorporating your comments would be made available shortly. This option is recommended when the required modifications are substantial.



2.7 When only minor changes are necessary, the other alternative is to adjust the bracketing plan on the screen. All original plans posted are kept as read-only files. To create an editable copy, click once to select any bracket and then click and drag that bracket using the left mouse. A dialog will appear, hit “enter” to have it confirmed.



2.8 On the new editable copy created, click and drag the brackets that require adjustment to their required position. It is highly recommended to zoom in where corrections are made and then zoom out to ensure that the brackets are aligned.



2.9 Click on the red arrow to attach the bracket base to the crown surface more closely. To tip the bracket, use the tipping diameter circling the bracket. Use the “undo” and “redo” commands as necessary.

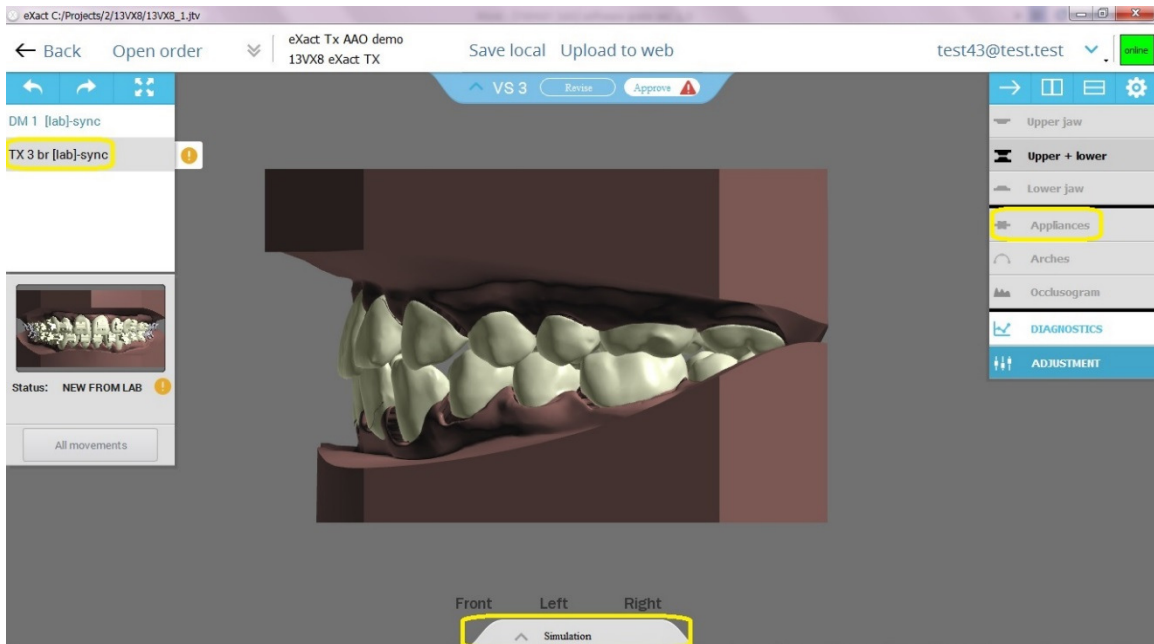


2.10 Once all changes have been completed, you can approve the plan for production. If you wish to keep working on the plan, save the edited copy either locally or more conveniently, upload it directly to your web account.

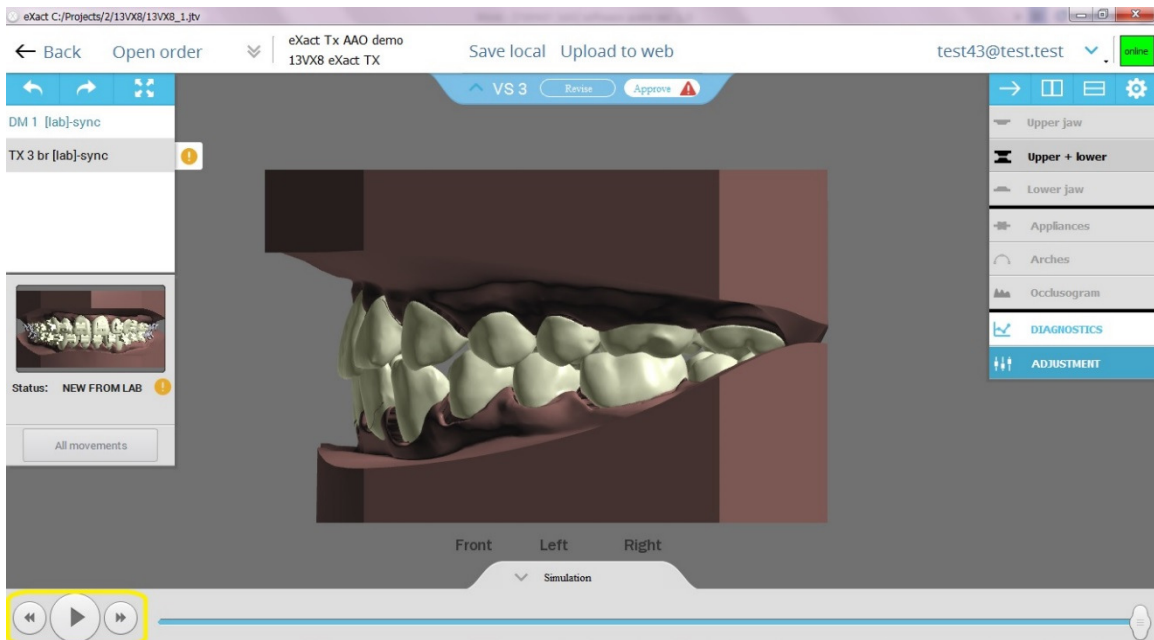
Section 3 – Reviewing and adjusting a Tx plan

3.1 Open an Rx case. At this point, the objective is to decide whether the suggested post-treatment set-up and the corresponding pre-treatment bracketing plan can be approved or whether changes are necessary.

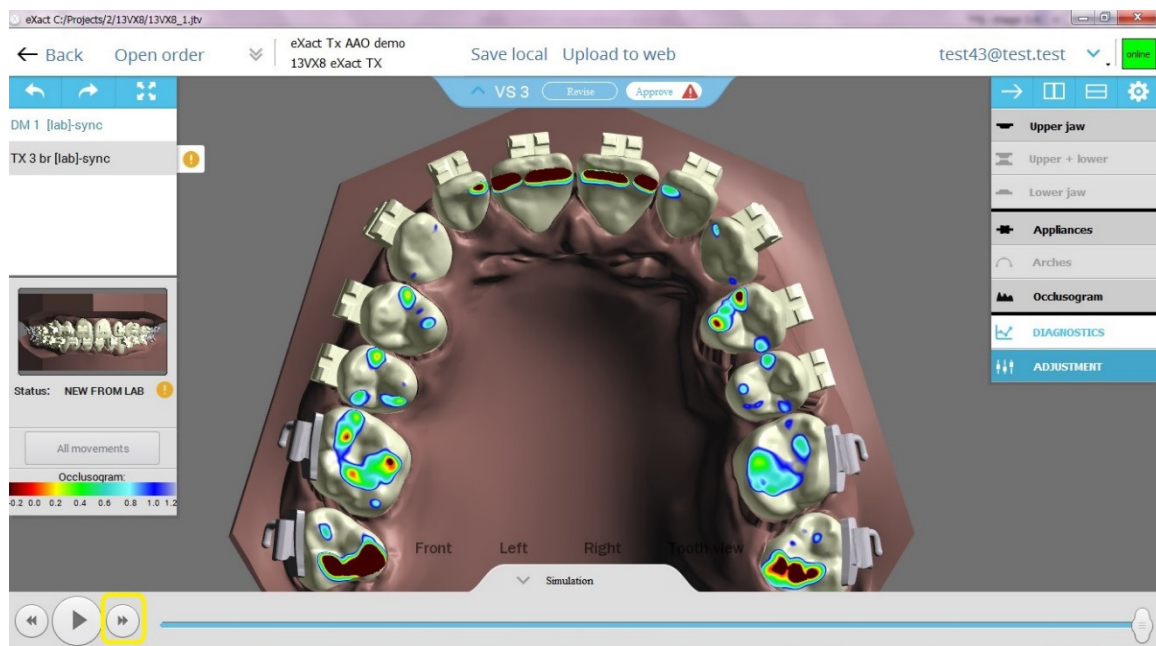
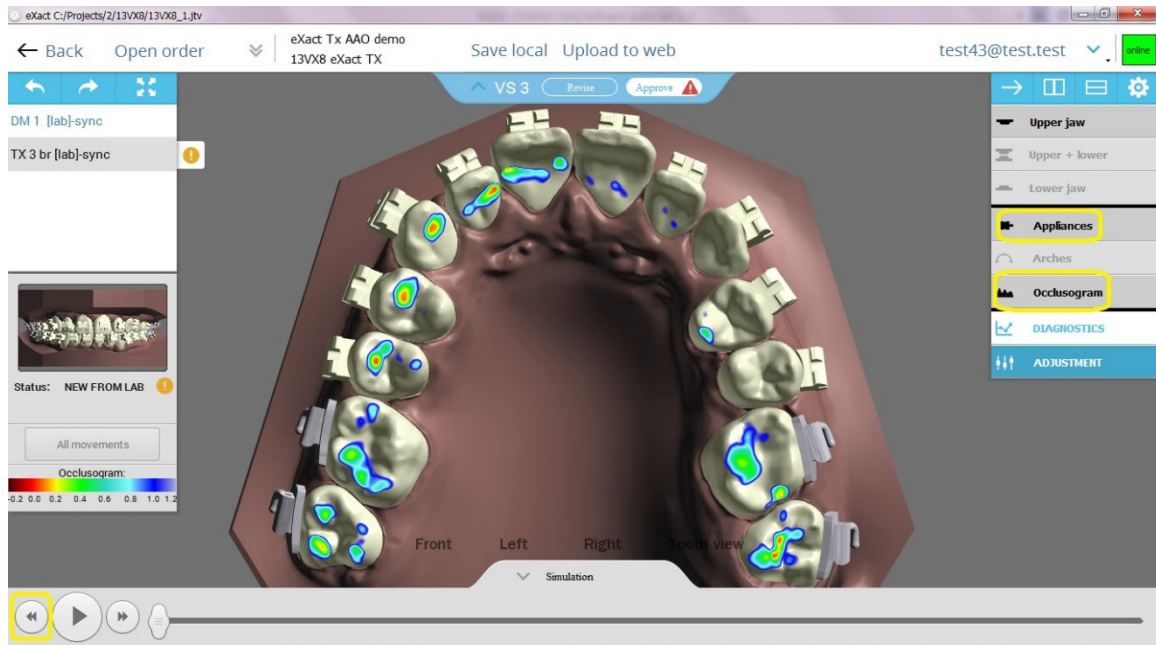
3.2 Select the relevant Tx plan and then expand the “Simulation” tab at the bottom of the screen. Ensure the “Appliances” module is turned off.



3.3 Now, run the simulation and watch expected case progression from start to finish. Repeat simulation from all four possible angles (front, left, right and back) as well as the separated upper and lower arches.



3.4 click on the “Appliances” (and optionally the “Arches/Wires”) buttons to view the simulation of the bracketed model. Use the “Forward” and “Backward” buttons on the simulation player to toggle between pre- and post-treatment views.



3.5 If no changes are necessary in the Tx bracketing plan, you can go ahead, hit “Approve” and the order will go into production.

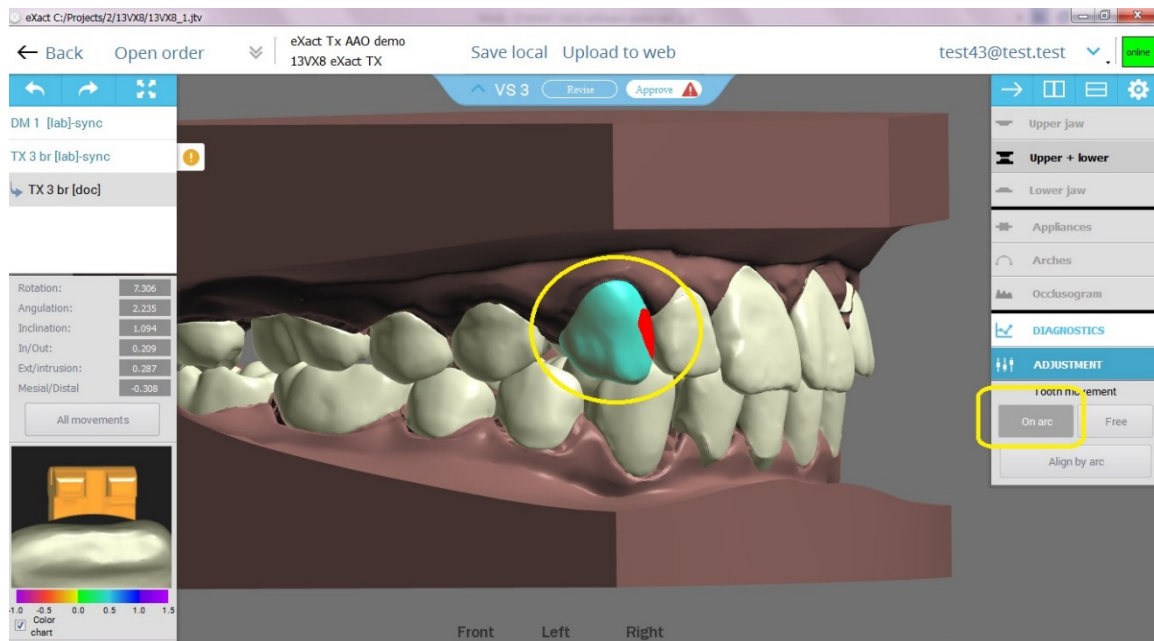
3.6 In the event the plan has to be modified, two methods are suggested. The first is to hit the “Revise” option and describe in writing the necessary changes. A new plan incorporating your comments would be made available shortly.

3.7 The other alternative is to adjust the bracketing plan by modifying the simulated set-up. All original plans posted are kept as read-only files. To create an editable copy, click once to select any tooth and then click and drag that tooth using the left mouse. A dialog will appear, hit “enter” to have it confirmed.

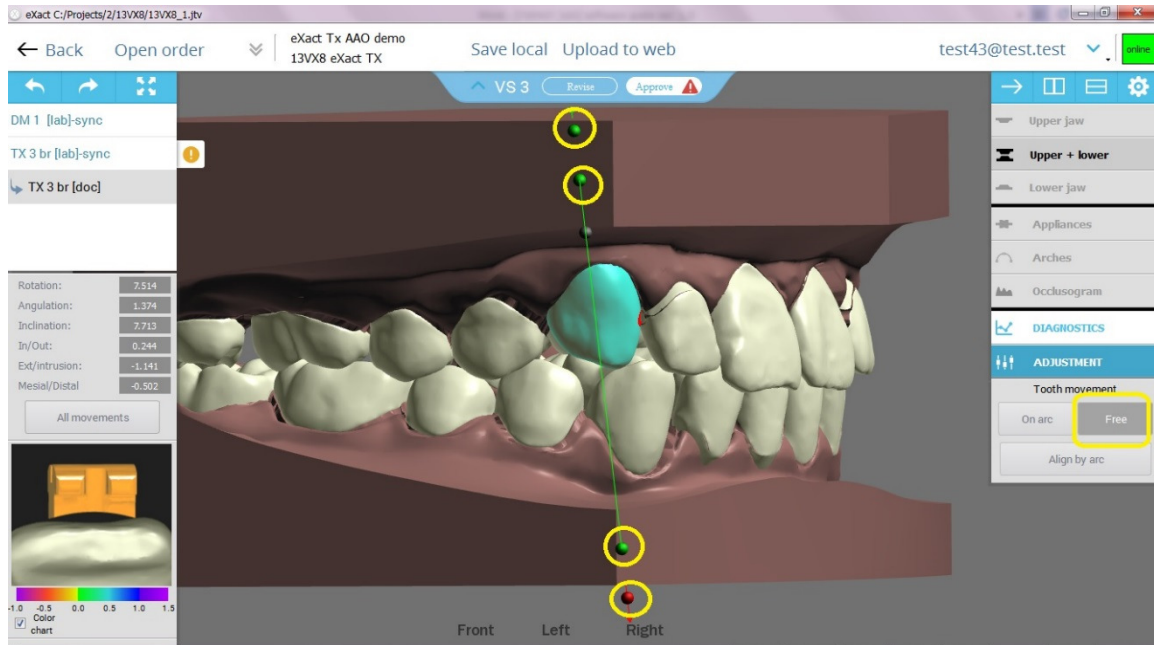


3.8 Switch off the “Appliances” (and “Wires/Arches”) modes to focus on the post-treatment teeth position. The software provides several functions to do that:

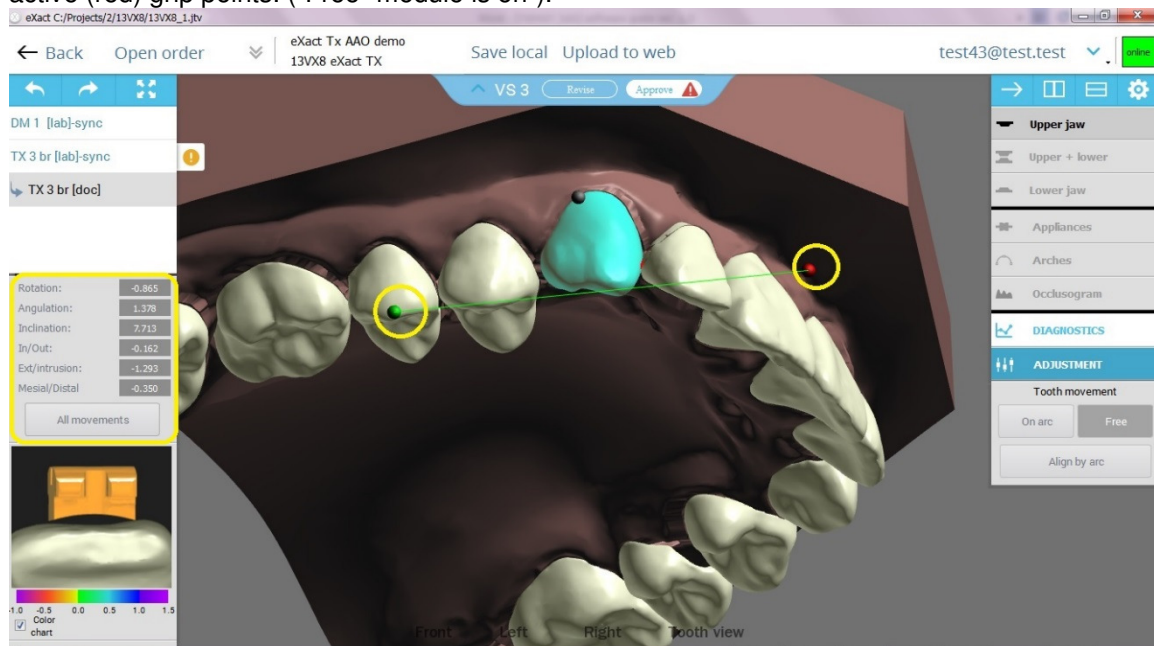
A. Slide to tooth mesial-distal on the virtual wire (“on arch/wire” option selected)



B. Extrude-intrude or angulate, by clicking once and dragging the active (red) grip points. (“Free” module is on”)



C. When the model is viewed occlusally, tipping is possible by clicking once and dragging the active (red) grip points. (“Free” module is on”).



All changes values are shown in the highlighted table.

3.9 to complete the changes and the review, switch on the “Appliances” mode. This will present again the bracketing plan corresponding with the set-up scenario.

3.10 Once all changes have been completed, you can approve the plan for production.



If you wish to keep working on the plan, save the edited copy either locally or more conveniently, upload it directly to your web account.